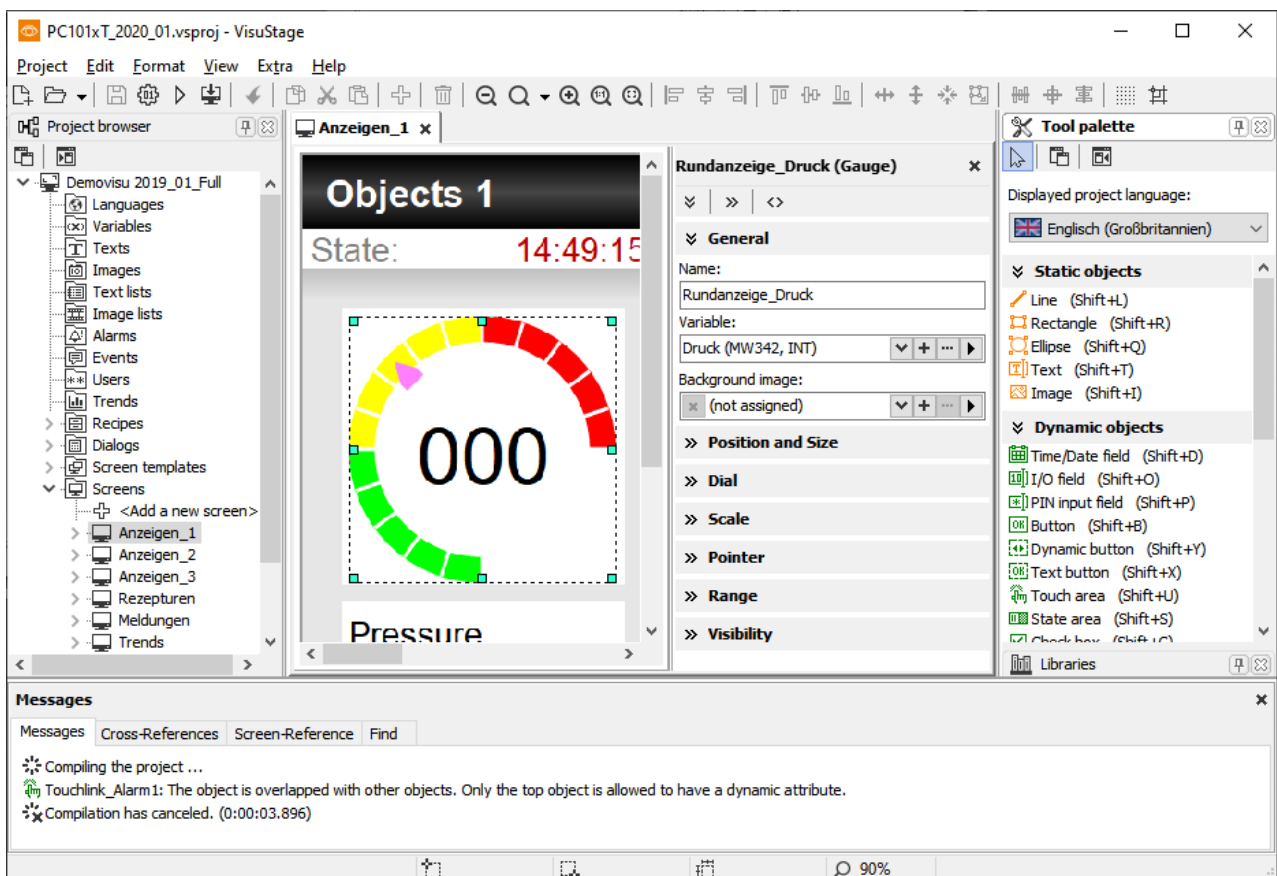


General features of VisuStage



The visualization will be done with the PC- tool „VisuStage“. All existing tables of S7-variables including symbol tables, pre-translated texts, alarms and messages can be imported and so they can be visualized easily. The ergonomics are very clear by using a resource pool (e.g. for external translating). This program guarantees a very clear and effective visualization and contains a these useful functions:

- Executable under Windows11 and under Windows 10
- Program language German or English as well,
- Unlimited number of project languages available,
- Creating of rotated screens possible (90°, 180°, 270°)
- Import S7-variables including symbol
- Import/Export of texts as csv-file
- Alarm- and event messaging system and -archive up to 1024 alarms,
- Trend data sampling, displaying and archiving for 4 trends with 16 channels each,
- Recipe management system with up to 64 recipes with 256 elements in 256 records,
- Menu template (master slide), image blocks, library functions, alignment functions, grid/snap function,
- User management system with 9 layers and with password protection,
- Display DBs x;y-values as function graph
- Screen saver, backlight switch-off function, clean screen and buzzer,
- Library with 2D- and 3D-symbols, and SVG-graphics
- integrated simulation tool with screenshot function
- 4-fold VNC-server, Time sync with PLC
- Switch language/screen by variables from PLC
- Easy creation of web visualizations for INSEVIS Gateways and Edge HMIs



In spite of the huge functionality the program size and hardware requirements are minimal. This program is installed and started first time in less than 2 minutes. All can be used on a small net book as well as on a PC with multiple monitors.

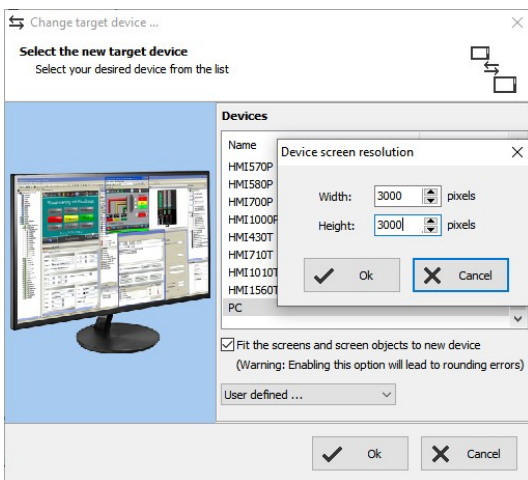
Select during installation:

LEAN = immediate monolingual free version

DEMO = 30-day multilingual test version free of charge, then monolingual version*

* The company license allows multiple languages for unlimited installations within the company and includes free updates in the first year. There is only a single license needed only for a whole company. After that a maintenance license extends this for a next year. If there is no maintenance license, the program runs unlimited it its last version.

Create free visualizations for Siemens-CPU's



- Select "PC" for the requested panel size and assign your target panel size (up to 3.000 x 3.000 pixel)
- Create, simulate and compile your visualization
- Copy the visualizations binary and the cost free RemoteStage into your target PC (needs OS Windows 11/10)
- After opening RemoteStage open the visualization binary and enter TSAP and IP-address of the partner PLC
- Both will be stored in the INI-file and visualization will be started and displayed with the process data received by Ethernet S7-communication from the partner CPU

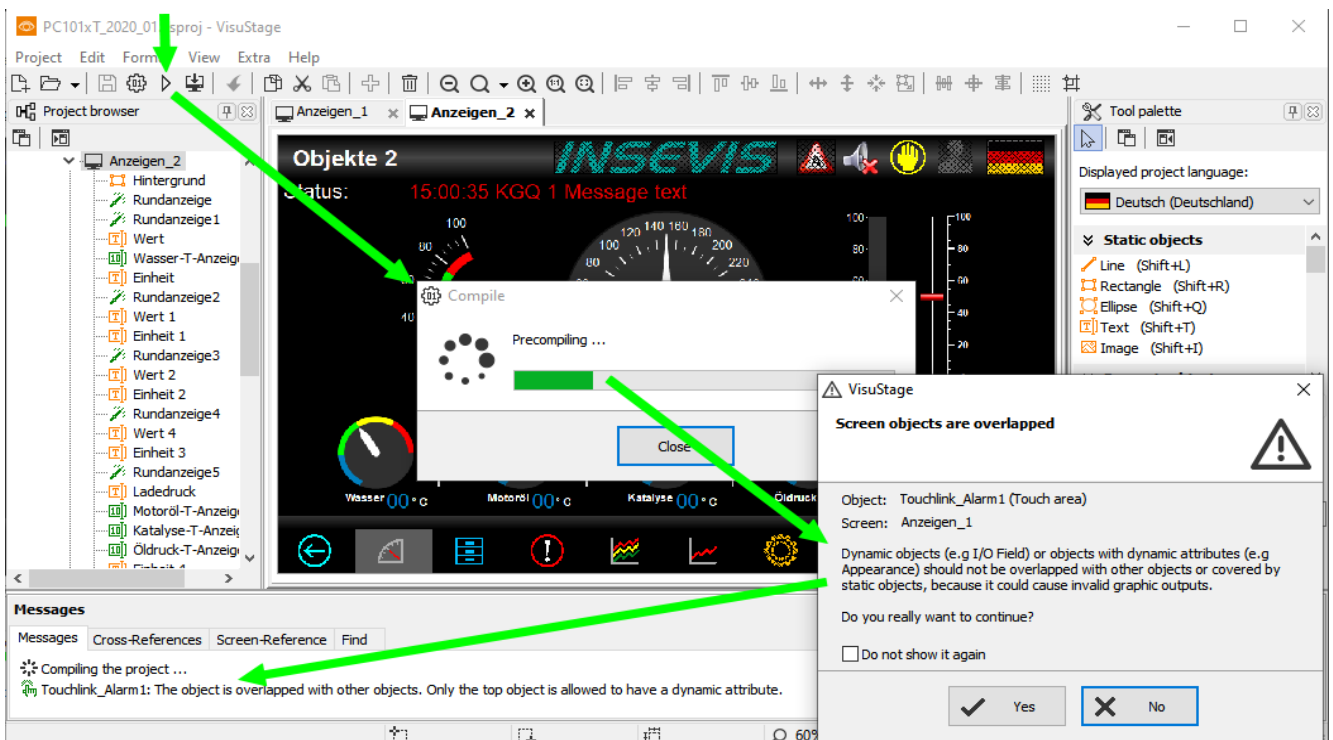
Compilation and error messages

The VisuStage checks the visualisation for errors and outputs error messages that lead directly to the incorrectly projected objects.

If an error is present, the compiler stops with a message on the object and type of error. (Double-click on error leads directly to faulty object)

Error treatment

- After finishing the visualization start the simulation by F9 or „▶“
- If there are errors, the compiler stops and creates a error message (object and error type).
- Double click this message and you will see the failed object.
- Correct the error and restart the simulation by „F9“ or „▶“



If all errors are cleared, the compiler creates a *.bin-file and the simulation tool „SimuStage“ starts automatically.

Simulation and download

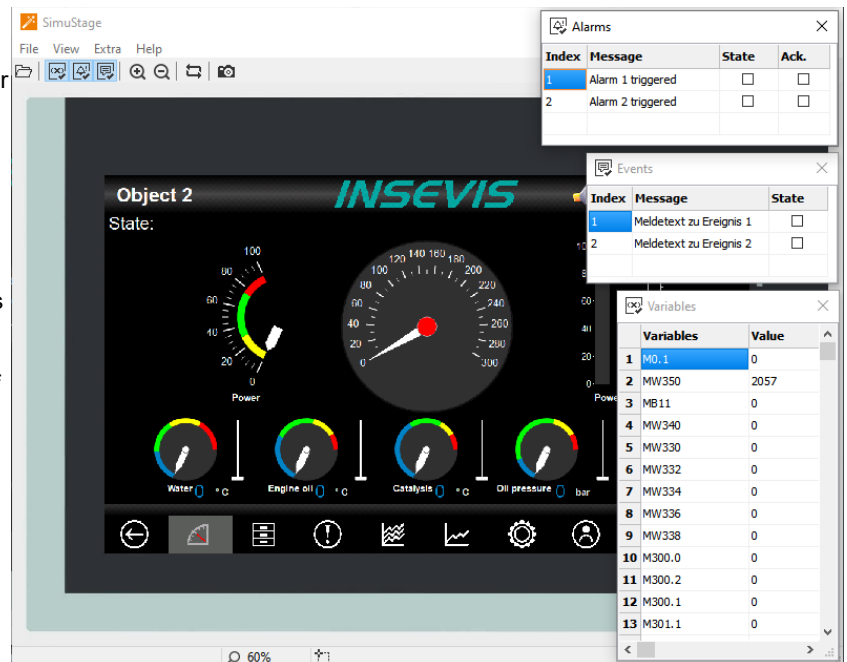
There are 2 ways to simulate your visualization:

Manual simulation: Starts the integrated simulation tool SimuStage in a new window. The operation by the user is by mouse pointer simulated like at the real touch panel.

By manipulating variable values in the variable table you can cause changes manually.

Events can be simulated (Coming - Leaving - Acknowledge) by checking/unchecking boxes in the SimuStage.

It is also possible to generate screen shots of the simulated screen for creating any kind of documentation.



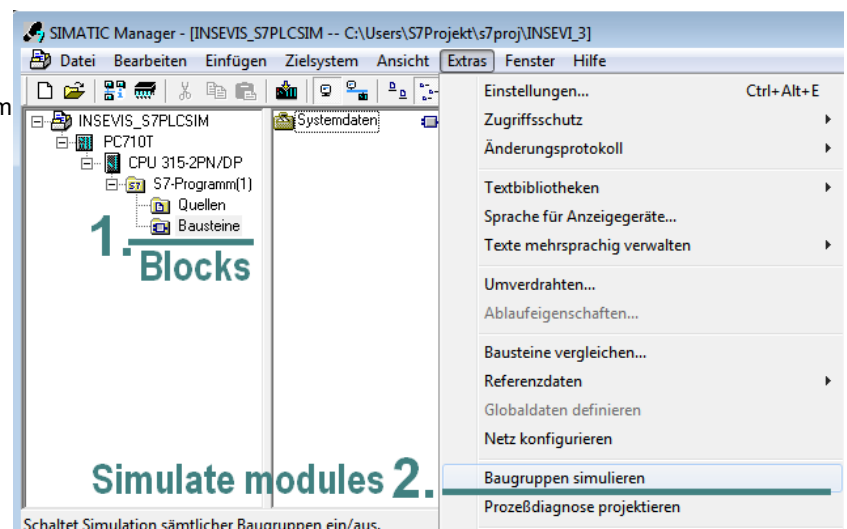
Automatical simulation: Starts the SimuStage together with the Siemens software S7-PLCSIM (what must be installed at the same PC). The process data come from S7-PLCSIM (not from PLCSIM Advanced – this is for 1200/1500CPUs). Of course, S7-PLCSIM does not simulate INSEVIS-SFCs/SFBs.

Start in the VisuStage by “Project” → “Simulate with S7-PLCSIM”

The (already installed) S7-PLCSIM must be opened from the S7-programming tool.

Here you find the call from SimaticManager

1. select “Blocks”
2. click on “Simulate modules”



To call Siemens-S7-PLCSIM from Siemens-TIA see the manual, available at our download pages

Copyright

This and all other documentation and software, supplied or hosted on INSEVIS web sites to download are copyrighted. Any duplicating of these data in any way without express approval by INSEVIS GmbH is not permitted. All property and copy rights of these documentation and software and every copy of it are reserved to INSEVIS GmbH.

Trade Marks

INSEVIS refers that all trade marks of particular companies used in own documentation are reserved trade marks are property of the particular owners and are subjected to common protection of trade marks.

Disclaimer

All technical details in this documentation were created by INSEVIS with highest diligence. Anyhow mistakes could not be excluded, so no responsibility is taken by INSEVIS for the complete correctness of this information. This documentation will reviewed regularly and necessary corrections will be done in next version.

With publication of this catalog all other versions are no longer valid.